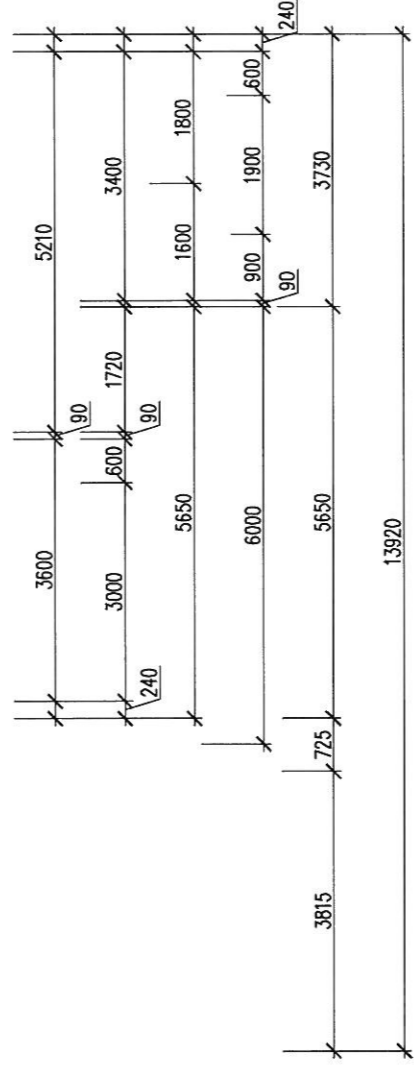
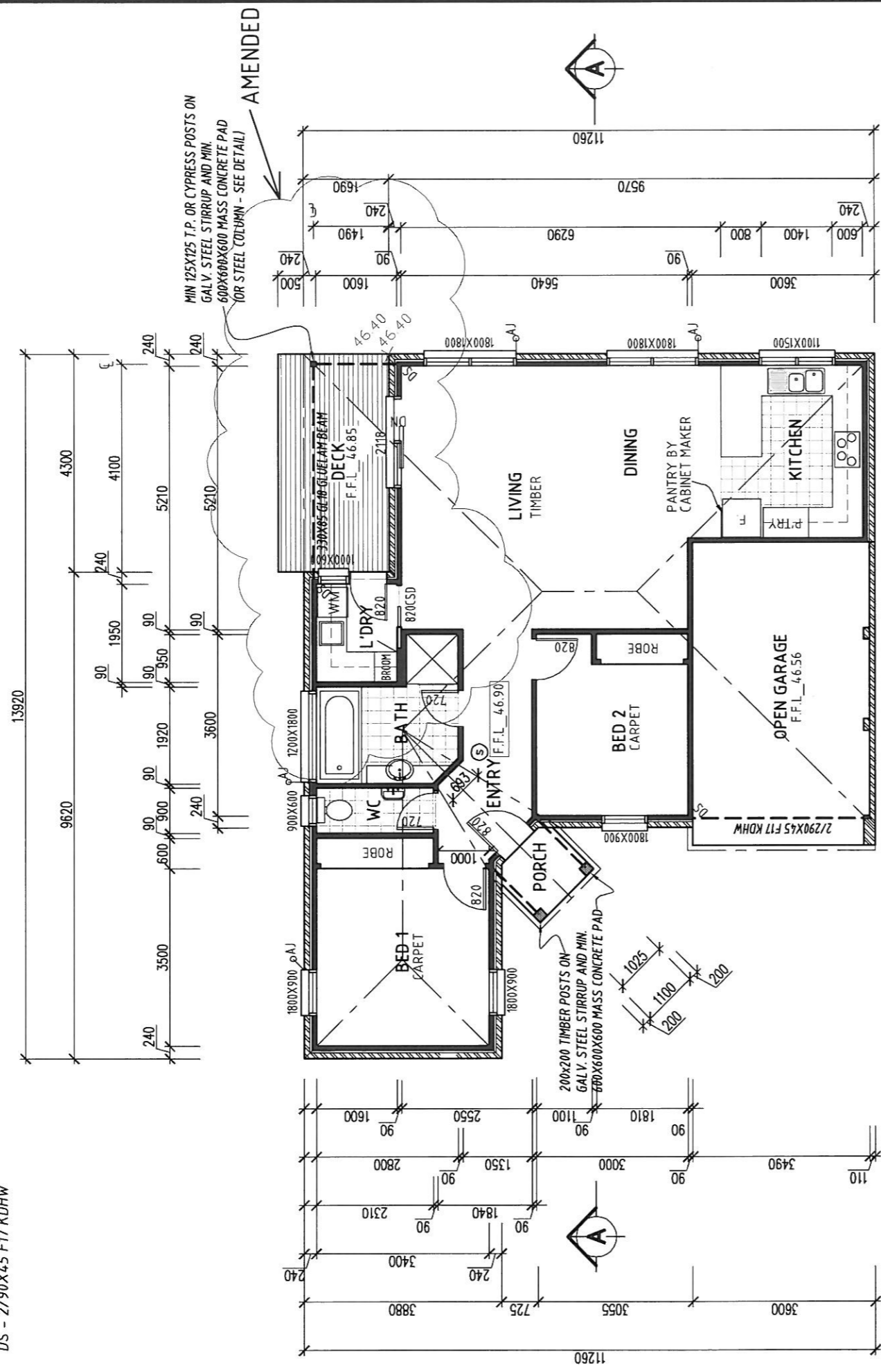


TIMBER SPECIFICATION:

STUDS: 90X35 MGP10 PINE @ 450 CTS.
 TOP PLATES: 2/35X90 MGP10 PINE
 BOTTOM PLATES: 45X90 MGP10 PINE
 JAMB STUDS:
 OPENINGS UP TO 900: 90X4.5 MGP10 PINE
 OPENINGS UP TO 1800: 2/90X35 MGP10 PINE
 LINTELS:
 OPENINGS UP TO 900: 120X4.5 MGP10
 OPENINGS UP TO 1800: 190X35 F17 KDHW
 DS - 2/90X4.5 F17 KDHW



UNIT 2 AREAS :

LIVING: 95.9msq (10.3 SQ)
 CARPORT: 21.6msq (2.3 SQ)
 PORCH: 2.0msq (0.2 SQ)

FLOOR PLAN UNIT 2



DATE AMENDED: 25th NOVEMBER 2010

date: 12 JULY 2010

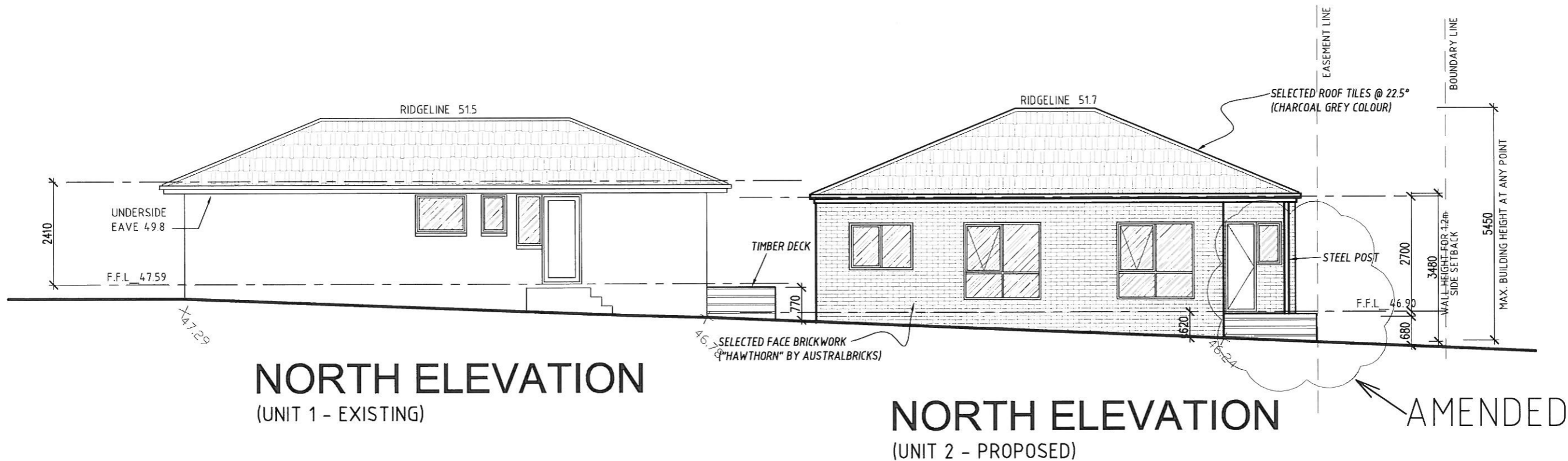
sheet: 4

scales: 1:100

DWG. No:

drawn:

09/134



DATE AMENDED: 25th NOVEMBER 2010

date: 12 JULY 2010	sheet: 7
scales: 1:100	DWG. No:
drawn:	09/134